

Cervical Spine Sonoanatomy

Ke-Vin Chang

MD, PhD, CIPS, RMSK
ASRA Pain Ultrasound Certificate
National Taiwan University Hospital
Bei-Hu Branch

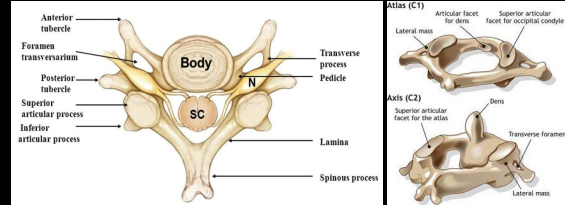


Anatomy

Special:

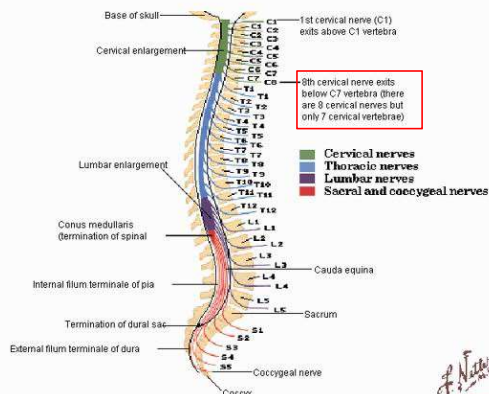
- C1 (atlas): no/rudimentary SP, prominent TP
- C2 (axis) : bifid SP
- C7: prominent SP, no ant. tubercle of TP

C3-C6: ant./post. tubercle of TP



SP: spinous process; TP: transverse process

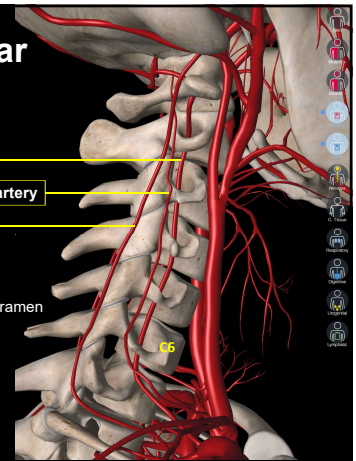
Relation of Spinal Nerve Roots to Vertebrae



Critical Vascular Structures

- Vertebral artery
- Ascending cervical artery
- Deep cervical artery

Vertebral artery (93% enters foramen transversarium at C6)
Inferior thyroid artery
Ascending cervical artery
Deep cervical artery
Radicular artery



Cervical Spine Level Identification

C6, C7 transverse process approach

- Cervical nerve root and stellate ganglion injection

Occiput, C1, C2 approach

- For upper cervical, facet, medial branch, GON, 3rd occipital nerve injection

Mastoid process, C1, C2 approach

- For unilateral upper cervical, facet, medial branch injection

Journal of Ultrasound in Medicine. 2013 Nov;32(11):1885-96

C6, C7 Transverse Process Approach

C6: sharp anterior tubercle, Chassaignac tubercle

C7: absent anterior tubercle, unprotected vertebral artery

